

Anti-Phospho-MPZL1-Tyr241 antibody (STJ194737)

STJ194737

GENERAL INFORMATION

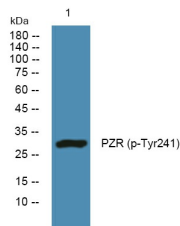
Product Type	Primary antibodies
Short Description	Rabbit polyclonal antibody anti-Phospho-Myelin Protein Zero-Like Protein 1-Tyr241 is suitable for use in Western Blot research applications.
Applications	WB
Host/Source	Rabbit
Reactivity	Human, Mouse, Rat

PRODUCT PROPERTIES

Clonality	Polyclonal
Clone ID	
Concentration	1 mg/mL
Conjugation	Unconjugated
Purification	The antibody was affinity-purified from rabbit anti-serum by affinity-chromatography.
Dilution Range	WB 1:1000-2000
Formulation	PBS, 50% Glycerol, 0.5% BSA and 0.02% Sodium Azide.
Isotype	IgG
Storage Instruction	Store at -20°C for up to 1 year from the date of receipt, and avoid repeat freeze-thaw cycles.

TARGET INFORMATION

Gene ID	9019
Gene Symbol	MPZL1
Uniprot ID	MPZL1_HUMAN
Immunogen	Synthesized phospho peptide around human PZR (Tyr241)
Immunogen Region	
Specificity	Phospho-MPZL1-Tyr241 polyclonal antibody (Myelin Protein Zero-Like Protein 1) binds to endogenous Myelin Protein Zero-Like Protein 1 only when phosphorylated at Tyr241.
Immunogen Sequence	



Western blot analysis of lysates from SW480 cells, primary antibody was diluted at 1:1000, 4°C over night

This product is suitable for in-vitro studies under the RESEARCH USE ONLY [RUO] licence. This product must not be used as for diagnostic or other medical purposes.
 St John's Laboratory Ltd, Knowledge Dock Business Centre, University Way, London, E16 2RD | Tel: 0208 223 3081