

Anti-Phospho-MYL9-Thr19/Ser20 antibody (STJ194729)

STJ194729

GENERAL INFORMATION

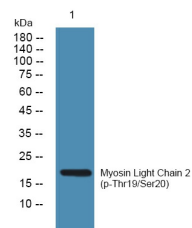
Product Type	Primary antibodies
Short Description	Rabbit polyclonal antibody anti-Phospho-Myosin Regulatory Light Polypeptide 9-Thr19/Ser20 is suitable for use in Western Blot research applications.
Applications	WB
Host/Source	Rabbit
Reactivity	Human, Mouse, Rat

PRODUCT PROPERTIES

Clonality	Polyclonal
Clone ID	
Concentration	1 mg/mL
Conjugation	Unconjugated
Purification	The antibody was affinity-purified from rabbit anti-serum by affinity-chromatography.
Dilution Range	WB 1:1000-2000
Formulation	PBS, 50% Glycerol, 0.5% BSA and 0.02% Sodium Azide.
Isotype	IgG
Storage Instruction	Store at -20°C for up to 1 year from the date of receipt, and avoid repeat freeze-thaw cycles.

TARGET INFORMATION

Gene ID	10398
Gene Symbol	MYL9
Uniprot ID	MYL9_HUMAN
Immunogen Region	Synthesized phosho peptide around human Myosin Light Chain 2 (Thr19 and Ser20)
Specificity	Phospho-MYL9-Thr19/Ser20 polyclonal antibody (Myosin Regulatory Light Polypeptide 9) binds to endogenous Myosin Regulatory Light Polypeptide 9 only when phosphorylated at Thr19/Ser20.
Immunogen Sequence	



Western blot analysis of lysates from SW480 cells, primary antibody was diluted at 1:1000, 4°C over night

This product is suitable for in-vitro studies under the RESEARCH USE ONLY [RUO] licence. This product must not be used as for diagnostic or other medical purposes.
 St John's Laboratory Ltd, Knowledge Dock Business Centre, University Way, London, E16 2RD | Tel: 0208 223 3081