

Anti-Phospho-MCL1-Ser159/Thr163 antibody (STJ194720)

STJ194720

GENERAL INFORMATION

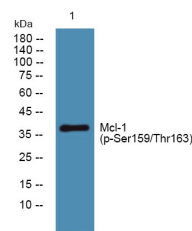
Product Type	Primary antibodies
Short Description	Rabbit polyclonal antibody anti-Phospho-Induced Myeloid Leukemia Cell Differentiation Protein Mcl-1-Ser159/Thr163 is suitable for use in Western Blot research applications.
Applications	WB
Host/Source	Rabbit
Reactivity	Human, Rat, Mouse

PRODUCT PROPERTIES

Clonality	Polyclonal
Clone ID	
Concentration	1 mg/mL
Conjugation	Unconjugated
Purification	The antibody was affinity-purified from rabbit anti-serum by affinity-chromatography.
Dilution Range	WB 1:1000-2000
Formulation	PBS, 50% Glycerol, 0.5% BSA and 0.02% Sodium Azide.
Isotype	IgG
Storage Instruction	Store at -20°C for up to 1 year from the date of receipt, and avoid repeat freeze-thaw cycles.

TARGET INFORMATION

Gene ID	4170
Gene Symbol	MCL1
Uniprot ID	MCL1_HUMAN
Immunogen	Synthesized phosho peptide around human Mcl-1 (Ser159 and Thr163)
Region	
Specificity	Phospho-MCL1-Ser159/Thr163 polyclonal antibody (Induced Myeloid Leukemia Cell Differentiation Protein Mcl-1) binds to endogenous Induced Myeloid Leukemia Cell Differentiation Protein Mcl-1 only when phosphorylated at Ser159/Thr163.
Immunogen Sequence	



Western blot analysis of lysates from SH-SY5Y cells, primary antibody was diluted at 1:1000, 4°C over night

This product is suitable for in-vitro studies under the RESEARCH USE ONLY [RUO] licence. This product must not be used as for diagnostic or other medical purposes.
 St John's Laboratory Ltd, Knowledge Dock Business Centre, University Way, London, E16 2RD | Tel: 0208 223 3081