

## Anti-Phospho-DAPP1-Tyr139 antibody (STJ194707)

STJ194707

### GENERAL INFORMATION

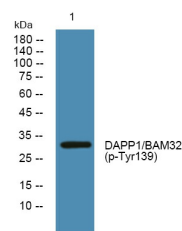
|                          |                                                                                                                                                                                         |
|--------------------------|-----------------------------------------------------------------------------------------------------------------------------------------------------------------------------------------|
| <b>Product Type</b>      | Primary antibodies                                                                                                                                                                      |
| <b>Short Description</b> | Rabbit polyclonal antibody anti-Phospho-Dual Adapter For Phosphotyrosine And 3-Phosphotyrosine And 3-Phosphoinositide-Tyr139 is suitable for use in Western Blot research applications. |
| <b>Applications</b>      | WB                                                                                                                                                                                      |
| <b>Host/Source</b>       | Rabbit                                                                                                                                                                                  |
| <b>Reactivity</b>        | Human, Rat, Mouse                                                                                                                                                                       |

### PRODUCT PROPERTIES

|                            |                                                                                                |
|----------------------------|------------------------------------------------------------------------------------------------|
| <b>Clonality</b>           | Polyclonal                                                                                     |
| <b>Clone ID</b>            |                                                                                                |
| <b>Concentration</b>       | 1 mg/mL                                                                                        |
| <b>Conjugation</b>         | Unconjugated                                                                                   |
| <b>Purification</b>        | The antibody was affinity-purified from rabbit anti-serum by affinity-chromatography.          |
| <b>Dilution Range</b>      | WB 1:1000-2000                                                                                 |
| <b>Formulation</b>         | PBS, 50% Glycerol, 0.5% BSA and 0.02% Sodium Azide.                                            |
| <b>Isotype</b>             | IgG                                                                                            |
| <b>Storage Instruction</b> | Store at -20°C for up to 1 year from the date of receipt, and avoid repeat freeze-thaw cycles. |

### TARGET INFORMATION

|                           |                                                                                                                                                                                                                                                            |
|---------------------------|------------------------------------------------------------------------------------------------------------------------------------------------------------------------------------------------------------------------------------------------------------|
| <b>Gene ID</b>            | 27071                                                                                                                                                                                                                                                      |
| <b>Gene Symbol</b>        | DAPP1                                                                                                                                                                                                                                                      |
| <b>Uniprot ID</b>         | DAPP1_HUMAN                                                                                                                                                                                                                                                |
| <b>Immunogen</b>          | Synthesized phosho peptide around human DAPP1 (Tyr139)                                                                                                                                                                                                     |
| <b>Region</b>             |                                                                                                                                                                                                                                                            |
| <b>Specificity</b>        | Phospho-DAPP1-Tyr139 polyclonal antibody (Dual Adapter For Phosphotyrosine And 3-Phosphotyrosine And 3-Phosphoinositide) binds to endogenous Dual Adapter For Phosphotyrosine And 3-Phosphotyrosine And 3-Phosphoinositide only when phosphorylated at Tyr |
| <b>Immunogen Sequence</b> |                                                                                                                                                                                                                                                            |



Western blot analysis of lysates from U2OS cells, primary antibody was diluted at 1:1000, 4°C over night

This product is suitable for in-vitro studies under the RESEARCH USE ONLY [RUO] licence. This product must not be used as for diagnostic or other medical purposes.  
 St John's Laboratory Ltd, Knowledge Dock Business Centre, University Way, London, E16 2RD | Tel: 0208 223 3081