

Anti-Phospho-CaMK2-Thr286 antibody (STJ194696)

STJ194696

GENERAL INFORMATION

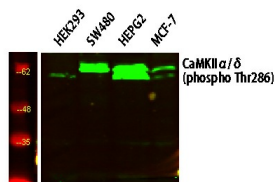
Product Type	Primary antibodies
Short Description	Rabbit polyclonal antibody anti-Phospho-Calcium/calmodulin-dependent protein kinase type II subunit alpha and Calcium/calmodulin-dependent protein kinase type II subunit delta-Thr286 is suitable for use in Western Blot and ELISA research applications
Applications	WB, ELISA
Host/Source	Rabbit
Reactivity	Human, Mouse, Rat

PRODUCT PROPERTIES

Clonality	Polyclonal
Clone ID	
Concentration	1 mg/mL
Conjugation	Unconjugated
Purification	The antibody was affinity-purified from rabbit anti-serum by affinity-chromatography.
Dilution	WB 1:500-2000
Range	ELISA 1:5000-20000
Formulation	PBS, 50% Glycerol, 0.5% BSA and 0.02% Sodium Azide.
Isotype	IgG
Storage	Store at -20°C for up to 1 year from the date of receipt, and avoid repeat freeze-thaw cycles.
Instruction	

TARGET INFORMATION

Gene ID	817 815
Gene Symbol	CAMK2D CAMK2A
Uniprot ID	KCC2D_HUMAN KCC2A_HUMAN
Immunogen	Synthesized pospho peptide derived from human CaMK2 (Phospho-Thr286)
Immunogen Region	
Specificity	Phospho-CaMK2-Thr286 polyclonal antibody (Calcium/calmodulin-dependent protein kinase type II subunit alpha and Calcium/calmodulin-dependent protein kinase type II subunit delta) binds to endogenous Calcium/calmodulin-dependent protein kinase type II
Immunogen Sequence	



Western blot analysis of various lysates, primary antibody was diluted at 1:1000, 4°C over night, secondary antibody (cat: NA) was diluted at 1:10000, 37°C 1hour.

This product is suitable for in-vitro studies under the RESEARCH USE ONLY [RUO] licence. This product must not be used as for diagnostic or other medical purposes.
St John's Laboratory Ltd, Knowledge Dock Business Centre, University Way, London, E16 2RD | Tel: 0208 223 3081