

Anti-PRH1.PRH2 antibody (STJ194628)

STJ194628

GENERAL INFORMATION

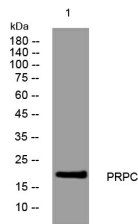
| | |
|--------------------------|--|
| Product Type | Primary antibodies |
| Short Description | Rabbit polyclonal antibody anti-Salivary Acidic Proline-Rich Phosphoprotein 1/2 is suitable for use in Western Blot research applications. |
| Applications | WB |
| Host/Source | Rabbit |
| Reactivity | Human, Rat, Mouse |

PRODUCT PROPERTIES

| | |
|----------------------------|--|
| Clonality | Polyclonal |
| Clone ID | |
| Concentration | 1 mg/mL |
| Conjugation | Unconjugated |
| Purification | The antibody was affinity-purified from rabbit anti-serum by affinity-chromatography. |
| Dilution Range | WB 1:500-2000 |
| Formulation | PBS, 50% Glycerol, 0.5% BSA and 0.02% Sodium Azide. |
| Isotype | IgG |
| Storage Instruction | Store at -20°C for up to 1 year from the date of receipt, and avoid repeat freeze-thaw cycles. |

TARGET INFORMATION

| | |
|---------------------------|--|
| Gene ID | 5554/5555 |
| Gene Symbol | PRH1.PRH2 |
| Uniprot ID | PRPC_HUMAN |
| Immunogen | Synthesized peptide derived from human PRPC |
| Immunogen Region | |
| Specificity | PRH1.PRH2 polyclonal antibody (Salivary Acidic Proline-Rich Phosphoprotein 1/2) binds to endogenous Salivary Acidic Proline-Rich Phosphoprotein 1/2. |
| Immunogen Sequence | |



Western blot analysis of lysates from 293T cells, primary antibody was diluted at 1:1000, 4°C over night

This product is suitable for in-vitro studies under the RESEARCH USE ONLY [RUO] licence. This product must not be used as for diagnostic or other medical purposes.
St John's Laboratory Ltd, Knowledge Dock Business Centre, University Way, London, E16 2RD | Tel: 0208 223 3081