

Anti-SLCO4C1 antibody (STJ194559)

STJ194559

GENERAL INFORMATION

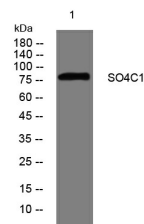
Product Type	Primary antibodies
Short Description	Rabbit polyclonal antibody anti-Solute Carrier Organic Anion Transporter Family Member 4c1 is suitable for use in Western Blot research applications.
Applications	WB
Host/Source	Rabbit
Reactivity	Human, Mouse, Rat

PRODUCT PROPERTIES

Clonality	Polyclonal
Clone ID	
Concentration	1 mg/mL
Conjugation	Unconjugated
Purification	The antibody was affinity-purified from rabbit anti-serum by affinity-chromatography.
Dilution Range	WB 1:500-2000
Formulation	PBS, 50% Glycerol, 0.5% BSA and 0.02% Sodium Azide.
Isotype	IgG
Storage Instruction	Store at -20°C for up to 1 year from the date of receipt, and avoid repeat freeze-thaw cycles.

TARGET INFORMATION

Gene ID	353189
Gene Symbol	SLCO4C1
Uniprot ID	SO4C1_HUMAN
Immunogen	Synthesized peptide derived from human SO4C1
Immunogen Region	
Specificity	SLCO4C1 polyclonal antibody (Solute Carrier Organic Anion Transporter Family Member 4c1) binds to endogenous Solute Carrier Organic Anion Transporter Family Member 4c1.
Immunogen Sequence	



Western blot analysis of lysates from HeLa cells, primary antibody was diluted at 1:1000, 4°C over night