

Anti-GLYATL2 antibody (STJ194514)

STJ194514

GENERAL INFORMATION

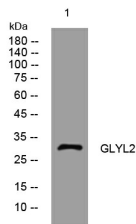
Product Type	Primary antibodies
Short Description	Rabbit polyclonal antibody anti-Glycine N-Acyltransferase-Like Protein 2 is suitable for use in Western Blot research applications.
Applications	WB
Host/Source	Rabbit
Reactivity	Human, Rat, Mouse

PRODUCT PROPERTIES

Clonality	Polyclonal
Clone ID	
Concentration	1 mg/mL
Conjugation	Unconjugated
Purification	The antibody was affinity-purified from rabbit anti-serum by affinity-chromatography.
Dilution Range	WB 1:500-2000
Formulation	PBS, 50% Glycerol, 0.5% BSA and 0.02% Sodium Azide.
Isotype	IgG
Storage Instruction	Store at -20°C for up to 1 year from the date of receipt, and avoid repeat freeze-thaw cycles.

TARGET INFORMATION

Gene ID	219970
Gene Symbol	GLYATL2
Uniprot ID	GLYL2_HUMAN
Immunogen	Synthesized peptide derived from human GLYL2
Immunogen Region	
Specificity	GLYATL2 polyclonal antibody (Glycine N-Acyltransferase-Like Protein 2) binds to endogenous Glycine N-Acyltransferase-Like Protein 2.
Immunogen Sequence	



Western blot analysis of lysates from 293T cells, primary antibody was diluted at 1:1000, 4°C over night