

Anti-SLC31A2 antibody (STJ194332)

STJ194332

GENERAL INFORMATION

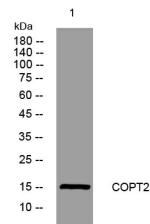
Product Type	Primary antibodies
Short Description	Rabbit polyclonal antibody anti-Probable Low Affinity Copper Uptake Protein 2 is suitable for use in Western Blot research applications.
Applications	WB
Host/Source	Rabbit
Reactivity	Human, Mouse

PRODUCT PROPERTIES

Clonality	Polyclonal
Clone ID	
Concentration	1 mg/mL
Conjugation	Unconjugated
Purification	The antibody was affinity-purified from rabbit anti-serum by affinity-chromatography.
Dilution Range	WB 1:500-2000
Formulation	PBS, 50% Glycerol, 0.5% BSA and 0.02% Sodium Azide.
Isotype	IgG
Storage Instruction	Store at -20°C for up to 1 year from the date of receipt, and avoid repeat freeze-thaw cycles.

TARGET INFORMATION

Gene ID	1318
Gene Symbol	SLC31A2
Uniprot ID	COPT2_HUMAN
Immunogen	Synthesized peptide derived from human COPT2
Immunogen Region	
Specificity	SLC31A2 polyclonal antibody (Probable Low Affinity Copper Uptake Protein 2) binds to endogenous Probable Low Affinity Copper Uptake Protein 2.
Immunogen Sequence	



Western blot analysis of lysates from MDA-MB cells. primary antibody was diluted at 1:1000, 4°C over night