

## Anti-LAMP5 antibody (STJ194326)

STJ194326

### GENERAL INFORMATION

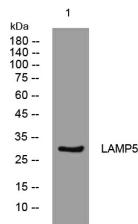
<b>Product Type</b>	Primary antibodies
<b>Short Description</b>	Rabbit polyclonal antibody anti-Lysosome-Associated Membrane Glycoprotein 5 is suitable for use in Western Blot research applications.
<b>Applications</b>	WB
<b>Host/Source</b>	Rabbit
<b>Reactivity</b>	Human, Mouse, Rat

### PRODUCT PROPERTIES

<b>Clonality</b>	Polyclonal
<b>Clone ID</b>	
<b>Concentration</b>	1 mg/mL
<b>Conjugation</b>	Unconjugated
<b>Purification</b>	The antibody was affinity-purified from rabbit anti-serum by affinity-chromatography.
<b>Dilution Range</b>	WB 1:500-2000
<b>Formulation</b>	PBS, 50% Glycerol, 0.5% BSA and 0.02% Sodium Azide.
<b>Isotype</b>	IgG
<b>Storage Instruction</b>	Store at -20°C for up to 1 year from the date of receipt, and avoid repeat freeze-thaw cycles.

### TARGET INFORMATION

<b>Gene ID</b>	24141
<b>Gene Symbol</b>	LAMP5
<b>Uniprot ID</b>	LAMP5_HUMAN
<b>Immunogen</b>	Synthesized peptide derived from human LAMP5
<b>Immunogen Region</b>	
<b>Specificity</b>	LAMP5 polyclonal antibody (Lysosome-Associated Membrane Glycoprotein 5) binds to endogenous Lysosome-Associated Membrane Glycoprotein 5.
<b>Immunogen Sequence</b>	



Western blot analysis of lysates from SW480 cells. primary antibody was diluted at 1:1000, 4°C over night