

## Anti-CHIC2 antibody (STJ194199)

STJ194199

### GENERAL INFORMATION

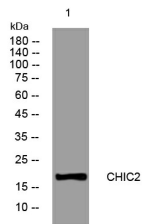
<b>Product Type</b>	Primary antibodies
<b>Short Description</b>	Rabbit polyclonal antibody anti-Cysteine-Rich Hydrophobic Domain-Containing Protein 2 is suitable for use in Western Blot research applications.
<b>Applications</b>	WB
<b>Host/Source</b>	Rabbit
<b>Reactivity</b>	Human, Mouse

### PRODUCT PROPERTIES

<b>Clonality</b>	Polyclonal
<b>Clone ID</b>	
<b>Concentration</b>	1 mg/mL
<b>Conjugation</b>	Unconjugated
<b>Purification</b>	The antibody was affinity-purified from rabbit anti-serum by affinity-chromatography.
<b>Dilution Range</b>	WB 1:500-2000
<b>Formulation</b>	PBS, 50% Glycerol, 0.5% BSA and 0.02% Sodium Azide.
<b>Isotype</b>	IgG
<b>Storage Instruction</b>	Store at -20°C for up to 1 year from the date of receipt, and avoid repeat freeze-thaw cycles.

### TARGET INFORMATION

<b>Gene ID</b>	<a href="#">26511</a>
<b>Gene Symbol</b>	<a href="#">CHIC2</a>
<b>Uniprot ID</b>	<a href="#">CHIC2_HUMAN</a>
<b>Immunogen</b>	Synthesized peptide derived from human CHIC2
<b>Immunogen Region</b>	
<b>Specificity</b>	CHIC2 polyclonal antibody (Cysteine-Rich Hydrophobic Domain-Containing Protein 2) binds to endogenous Cysteine-Rich Hydrophobic Domain-Containing Protein 2.
<b>Immunogen Sequence</b>	



Western blot analysis of lysates from MDA-MB cells. primary antibody was diluted at 1:1000, 4°C over night

This product is suitable for in-vitro studies under the RESEARCH USE ONLY [RUO] licence. This product must not be used as for diagnostic or other medical purposes.  
St John's Laboratory Ltd, Knowledge Dock Business Centre, University Way, London, E16 2RD | Tel: 0208 223 3081