

Anti-SLC15A3 antibody (STJ194173)

STJ194173

GENERAL INFORMATION

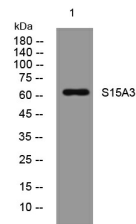
Product Type	Primary antibodies
Short Description	Rabbit polyclonal antibody anti-Solute Carrier Family 15 Member 3 is suitable for use in Western Blot research applications.
Applications	WB
Host/Source	Rabbit
Reactivity	Human, Mouse, Rat

PRODUCT PROPERTIES

Clonality	Polyclonal
Clone ID	
Concentration	1 mg/mL
Conjugation	Unconjugated
Purification	The antibody was affinity-purified from rabbit anti-serum by affinity-chromatography.
Dilution Range	WB 1:500-2000
Formulation	PBS, 50% Glycerol, 0.5% BSA and 0.02% Sodium Azide.
Isotype	IgG
Storage Instruction	Store at -20°C for up to 1 year from the date of receipt, and avoid repeat freeze-thaw cycles.

TARGET INFORMATION

Gene ID	51296
Gene Symbol	SLC15A3
Uniprot ID	S15A3_HUMAN
Immunogen	Synthesized peptide derived from human S15A3
Immunogen Region	
Specificity	SLC15A3 polyclonal antibody (Solute Carrier Family 15 Member 3) binds to endogenous Solute Carrier Family 15 Member 3.
Immunogen Sequence	



Western blot analysis of lysates from 293T cells, primary antibody was diluted at 1:1000, 4°C over night

This product is suitable for in-vitro studies under the RESEARCH USE ONLY [RUO] licence. This product must not be used as for diagnostic or other medical purposes.
St John's Laboratory Ltd, Knowledge Dock Business Centre, University Way, London, E16 2RD | Tel: 0208 223 3081