

Anti-ATP2A3 antibody (STJ194126)

STJ194126

GENERAL INFORMATION

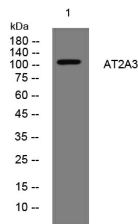
Product Type	Primary antibodies
Short Description	Rabbit polyclonal antibody anti-Sarcoplasmic/Endoplasmic Reticulum Calcium Atpase 3 is suitable for use in Western Blot research applications.
Applications	WB
Host/Source	Rabbit
Reactivity	Human, Mouse, Rat

PRODUCT PROPERTIES

Clonality	Polyclonal
Clone ID	
Concentration	1 mg/mL
Conjugation	Unconjugated
Purification	The antibody was affinity-purified from rabbit anti-serum by affinity-chromatography.
Dilution Range	WB 1:500-2000
Formulation	PBS, 50% Glycerol, 0.5% BSA and 0.02% Sodium Azide.
Isotype	IgG
Storage Instruction	Store at -20°C for up to 1 year from the date of receipt, and avoid repeat freeze-thaw cycles.

TARGET INFORMATION

Gene ID	489
Gene Symbol	ATP2A3
Uniprot ID	AT2A3_HUMAN
Immunogen	Synthesized peptide derived from human AT2A3
Immunogen Region	
Specificity	ATP2A3 polyclonal antibody (Sarcoplasmic/Endoplasmic Reticulum Calcium Atpase 3) binds to endogenous Sarcoplasmic/Endoplasmic Reticulum Calcium Atpase 3.
Immunogen Sequence	



Western blot analysis of lysates from HuvEc cells, primary antibody was diluted at 1:1000, 4°C over night