

Anti-DEPDC1B antibody (STJ194011)

STJ194011

GENERAL INFORMATION

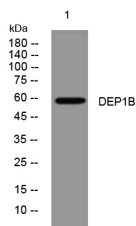
Product Type	Primary antibodies
Short Description	Rabbit polyclonal antibody anti-Dep Domain-Containing Protein 1b is suitable for use in Western Blot research applications.
Applications	WB
Host/Source	Rabbit
Reactivity	Human, Mouse

PRODUCT PROPERTIES

Clonality	Polyclonal
Clone ID	
Concentration	1 mg/mL
Conjugation	Unconjugated
Purification	The antibody was affinity-purified from rabbit anti-serum by affinity-chromatography.
Dilution Range	WB 1:500-2000
Formulation	PBS, 50% Glycerol, 0.5% BSA and 0.02% Sodium Azide.
Isotype	IgG
Storage Instruction	Store at -20°C for up to 1 year from the date of receipt, and avoid repeat freeze-thaw cycles.

TARGET INFORMATION

Gene ID	55789
Gene Symbol	DEPDC1B
Uniprot ID	DEP1B_HUMAN
Immunogen	Synthesized peptide derived from human DEP1B
Immunogen Region	
Specificity	DEPDC1B polyclonal antibody (Dep Domain-Containing Protein 1b) binds to endogenous Dep Domain-Containing Protein 1b.
Immunogen Sequence	



Western blot analysis of lysates from A431 cells, primary antibody was diluted at 1:1000, 4°C over night