

Anti-SLC7A6OS antibody (STJ193905)

STJ193905

GENERAL INFORMATION

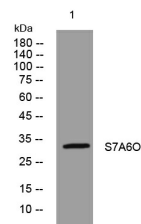
Product Type	Primary antibodies
Short Description	Rabbit polyclonal antibody anti-Probable Rna Polymerase Ii Nuclear Localization Protein Slc7a6os is suitable for use in Western Blot research applications.
Applications	WB
Host/Source	Rabbit
Reactivity	Human, Mouse

PRODUCT PROPERTIES

Clonality	Polyclonal
Clone ID	
Concentration	1 mg/mL
Conjugation	Unconjugated
Purification	The antibody was affinity-purified from rabbit anti-serum by affinity-chromatography.
Dilution Range	WB 1:500-2000
Formulation	PBS, 50% Glycerol, 0.5% BSA and 0.02% Sodium Azide.
Isotype	IgG
Storage Instruction	Store at -20°C for up to 1 year from the date of receipt, and avoid repeat freeze-thaw cycles.

TARGET INFORMATION

Gene ID	84138
Gene Symbol	SLC7A6OS
Uniprot ID	S7A6O_HUMAN
Immunogen	Synthesized peptide derived from human S7A6O
Immunogen Region	
Specificity	SLC7A6OS polyclonal antibody (Probable Rna Polymerase Ii Nuclear Localization Protein Slc7a6os) binds to endogenous Probable Rna Polymerase Ii Nuclear Localization Protein Slc7a6os.
Immunogen Sequence	



Western blot analysis of lysates from A431 cells. primary antibody was diluted at 1:1000, 4°C over night

This product is suitable for in-vitro studies under the RESEARCH USE ONLY [RUO] licence. This product must not be used as for diagnostic or other medical purposes.
 St John's Laboratory Ltd, Knowledge Dock Business Centre, University Way, London, E16 2RD | Tel: 0208 223 3081