

Anti-SCYL3 antibody (STJ193823)

STJ193823

GENERAL INFORMATION

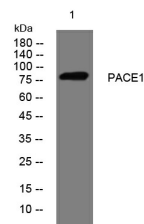
Product Type	Primary antibodies
Short Description	Rabbit polyclonal antibody anti-Protein-Associating With The Carboxyl-Terminal Domain Of Ezrin is suitable for use in Western Blot research applications.
Applications	WB
Host/Source	Rabbit
Reactivity	Human, Mouse

PRODUCT PROPERTIES

Clonality	Polyclonal
Clone ID	
Concentration	1 mg/mL
Conjugation	Unconjugated
Purification	The antibody was affinity-purified from rabbit anti-serum by affinity-chromatography.
Dilution Range	WB 1:500-2000
Formulation	PBS, 50% Glycerol, 0.5% BSA and 0.02% Sodium Azide.
Isotype	IgG
Storage Instruction	Store at -20°C for up to 1 year from the date of receipt, and avoid repeat freeze-thaw cycles.

TARGET INFORMATION

Gene ID	57147
Gene Symbol	SCYL3
Uniprot ID	PACE1_HUMAN
Immunogen	Synthesized peptide derived from human PACE1
Immunogen Region	
Specificity	SCYL3 polyclonal antibody (Protein-Associating With The Carboxyl-Terminal Domain Of Ezrin) binds to endogenous Protein-Associating With The Carboxyl-Terminal Domain Of Ezrin.
Immunogen Sequence	



Western blot analysis of lysates from SW480 cells. primary antibody was diluted at 1:1000, 4°C over night

This product is suitable for in-vitro studies under the RESEARCH USE ONLY [RUO] licence. This product must not be used as for diagnostic or other medical purposes.
 St John's Laboratory Ltd, Knowledge Dock Business Centre, University Way, London, E16 2RD | Tel: 0208 223 3081