

Anti-CATSPERE antibody (STJ193677)

STJ193677

GENERAL INFORMATION

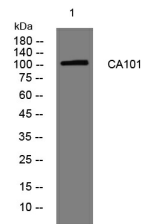
Product Type	Primary antibodies
Short Description	Rabbit polyclonal antibody anti-Cation Channel Sperm-Associated Protein Subunit Epsilon is suitable for use in Western Blot research applications.
Applications	WB
Host/Source	Rabbit
Reactivity	Human, Rat, Mouse

PRODUCT PROPERTIES

Clonality	Polyclonal
Clone ID	
Concentration	1 mg/mL
Conjugation	Unconjugated
Purification	The antibody was affinity-purified from rabbit anti-serum by affinity-chromatography.
Dilution Range	WB 1:500-2000
Formulation	PBS, 50% Glycerol, 0.5% BSA and 0.02% Sodium Azide.
Isotype	IgG
Storage Instruction	Store at -20°C for up to 1 year from the date of receipt, and avoid repeat freeze-thaw cycles.

TARGET INFORMATION

Gene ID	257044
Gene Symbol	CATSPERE
Uniprot ID	CTSRE_HUMAN
Immunogen	Synthesized peptide derived from human CA101
Immunogen Region	
Specificity	CATSPERE polyclonal antibody (Cation Channel Sperm-Associated Protein Subunit Epsilon) binds to endogenous Cation Channel Sperm-Associated Protein Subunit Epsilon.
Immunogen Sequence	



Western blot analysis of lysates from MCF-7 cells, primary antibody was diluted at 1:1000, 4°C over night