

Anti-1A1L2 antibody (STJ193612)

STJ193612

GENERAL INFORMATION

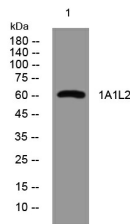
Product Type	Primary antibodies
Short Description	Rabbit polyclonal anti-1A1L2 antibody is suitable for use in Western Blot.
Background	
Applications	WB
Host/Source	Rabbit
Reactivity	Human, Mouse

PRODUCT PROPERTIES

Clonality	Polyclonal
Clone ID	
Concentration	1 mg/ml
Conjugation	Unconjugated
Purification	The antibody was affinity-purified from rabbit serum by affinity-chromatography using a specific immunogen.
Dilution Range	WB 1:500-2000
Formulation	Liquid in PBS containing 50% glycerol, 0.5% BSA and 0.02% sodium azide.
Isotype	IgG
Storage Instruction	Store at -20°C, and avoid repeat freeze-thaw cycles.

TARGET INFORMATION

Gene ID	390110
Gene Symbol	ACCSL
Uniprot ID	1A1L2_HUMAN
Immunogen	Synthesized peptide derived from human 1A1L2
Immunogen Region	
Specificity	This antibody detects endogenous levels of 1A1L2 at Human/Mouse
Immunogen Sequence	



Western blot analysis of lysates from MCF-7 cells, primary antibody was diluted at 1:1000, 4°C over night

This product is suitable for in-vitro studies under the RESEARCH USE ONLY [RUO] licence. This product must not be used as for diagnostic or other medical purposes.
St John's Laboratory Ltd, Knowledge Dock Business Centre, University Way, London, E16 2RD | Tel: 0208 223 3081 | Fax: 0207 681 2580