

Anti-CRELD2 antibody (STJ193492)

STJ193492

GENERAL INFORMATION

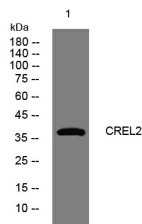
| | |
|--------------------------|---|
| Product Type | Primary antibodies |
| Short Description | Rabbit polyclonal antibody anti-Protein Disulfide Isomerase Creld2 is suitable for use in Western Blot research applications. |
| Applications | WB |
| Host/Source | Rabbit |
| Reactivity | Human, Mouse, Rat |

PRODUCT PROPERTIES

| | |
|----------------------------|--|
| Clonality | Polyclonal |
| Clone ID | |
| Concentration | 1 mg/mL |
| Conjugation | Unconjugated |
| Purification | The antibody was affinity-purified from rabbit anti-serum by affinity-chromatography. |
| Dilution Range | WB 1:500-2000 |
| Formulation | PBS, 50% Glycerol, 0.5% BSA and 0.02% Sodium Azide. |
| Isotype | IgG |
| Storage Instruction | Store at -20°C for up to 1 year from the date of receipt, and avoid repeat freeze-thaw cycles. |

TARGET INFORMATION

| | |
|---------------------------|---|
| Gene ID | 79174 |
| Gene Symbol | CRELD2 |
| Uniprot ID | CRELD2_HUMAN |
| Immunogen | Synthesized peptide derived from human CRELD2 |
| Immunogen Region | |
| Specificity | CRELD2 polyclonal antibody (Protein Disulfide Isomerase Creld2) binds to endogenous Protein Disulfide Isomerase Creld2. |
| Immunogen Sequence | |



Western blot analysis of lysates from MCF-7 cells, primary antibody was diluted at 1:1000, 4°C over night

This product is suitable for in-vitro studies under the RESEARCH USE ONLY [RUO] licence. This product must not be used as for diagnostic or other medical purposes.
St John's Laboratory Ltd, Knowledge Dock Business Centre, University Way, London, E16 2RD | Tel: 0208 223 3081