

Anti-C2CD4D antibody (STJ193489)

STJ193489

GENERAL INFORMATION

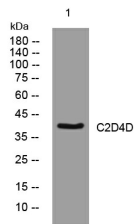
Product Type	Primary antibodies
Short Description	Rabbit polyclonal antibody anti-C2 Calcium-Dependent Domain-Containing Protein 4d is suitable for use in Western Blot research applications.
Applications	WB
Host/Source	Rabbit
Reactivity	Human, Rat, Mouse

PRODUCT PROPERTIES

Clonality	Polyclonal
Clone ID	
Concentration	1 mg/mL
Conjugation	Unconjugated
Purification	The antibody was affinity-purified from rabbit anti-serum by affinity-chromatography.
Dilution Range	WB 1:500-2000
Formulation	PBS, 50% Glycerol, 0.5% BSA and 0.02% Sodium Azide.
Isotype	IgG
Storage Instruction	Store at -20°C for up to 1 year from the date of receipt, and avoid repeat freeze-thaw cycles.

TARGET INFORMATION

Gene ID	100191040
Gene Symbol	C2CD4D
Uniprot ID	C2D4D_HUMAN
Immunogen	Synthesized peptide derived from human C2D4D
Immunogen Region	
Specificity	C2CD4D polyclonal antibody (C2 Calcium-Dependent Domain-Containing Protein 4d) binds to endogenous C2 Calcium-Dependent Domain-Containing Protein 4d.
Immunogen Sequence	



Western blot analysis of lysates from HpeG2 cells. primary antibody was diluted at 1:1000, 4°C over night