

Anti-Phospho-DCX-Ser378 antibody (STJ193223)

STJ193223

GENERAL INFORMATION

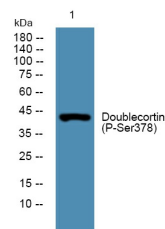
Product Type	Primary antibodies
Short Description	Rabbit polyclonal antibody anti-Phospho-Neuronal Migration Protein Doublecortin-Ser378 is suitable for use in Immunohistochemistry, Immunofluorescence and Western Blot research applications.
Applications	IHC-P, IF-P, WB
Host/Source	Rabbit
Reactivity	Human, Mouse, Rat

PRODUCT PROPERTIES

Clonality	Polyclonal
Clone ID	
Concentration	1 mg/mL
Conjugation	Unconjugated
Purification	The antibody was affinity-purified from rabbit anti-serum by affinity-chromatography.
Dilution	IHC-P 1:50-200
Range	WB 1:500-2000
Formulation	PBS, 50% Glycerol, 0.5% BSA and 0.02% Sodium Azide.
Isotype	IgG
Storage	Store at -20°C for up to 1 year from the date of receipt, and avoid repeat freeze-thaw cycles.
Instruction	

TARGET INFORMATION

Gene ID	1641
Gene Symbol	DCX
Uniprot ID	DCX_HUMAN
Immunogen	Synthesized peptide derived from human Doublecortin (Phospho-Ser378)
Immunogen Region	
Specificity	Phospho-DCX-Ser378 polyclonal antibody (Neuronal Migration Protein Doublecortin) binds to endogenous Neuronal Migration Protein Doublecortin only when phosphorylated at Ser378.
Immunogen Sequence	



Western blot analysis of lysates from A431 cells, primary antibody was diluted at 1:1000, 4°C over night

This product is suitable for in-vitro studies under the RESEARCH USE ONLY [RUO] licence. This product must not be used as for diagnostic or other medical purposes.
St John's Laboratory Ltd, Knowledge Dock Business Centre, University Way, London, E16 2RD | Tel: 0208 223 3081