

Anti-RAD1 antibody (STJ193200)

STJ193200

GENERAL INFORMATION

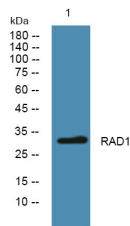
Product Type	Primary antibodies
Short Description	Rabbit polyclonal antibody anti-Cell Cycle Checkpoint Protein Rad1 is suitable for use in Immunohistochemistry, Immunofluorescence and Western Blot research applications.
Applications	IHC-P, IF-P, WB
Host/Source	Rabbit
Reactivity	Human, Mouse

PRODUCT PROPERTIES

Clonality	Polyclonal
Clone ID	
Concentration	1 mg/mL
Conjugation	Unconjugated
Purification	The antibody was affinity-purified from rabbit anti-serum by affinity-chromatography.
Dilution Range	IHC-P 1:50-200 WB 1:500-2000
Formulation	PBS, 50% Glycerol, 0.5% BSA and 0.02% Sodium Azide.
Isotype	IgG
Storage	Store at -20°C for up to 1 year from the date of receipt, and avoid repeat freeze-thaw cycles.
Instruction	

TARGET INFORMATION

Gene ID	5810
Gene Symbol	RAD1
Uniprot ID	RAD1_HUMAN
Immunogen	Synthesized peptide derived from human RAD1
Immunogen Region	
Specificity	RAD1 polyclonal antibody (Cell Cycle Checkpoint Protein Rad1) binds to endogenous Cell Cycle Checkpoint Protein Rad1.
Immunogen Sequence	



Western blot analysis of lysates from PC12 cells, primary antibody was diluted at 1:1000, 4°C over night

This product is suitable for in-vitro studies under the RESEARCH USE ONLY [RUO] licence. This product must not be used as for diagnostic or other medical purposes.
St John's Laboratory Ltd, Knowledge Dock Business Centre, University Way, London, E16 2RD | Tel: 0208 223 3081