

Anti-MICB antibody (STJ193195)

STJ193195

GENERAL INFORMATION

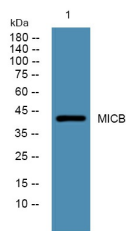
Product Type	Primary antibodies
Short Description	Rabbit polyclonal antibody anti-Mhc Class I Polypeptide-Related Sequence B is suitable for use in Immunohistochemistry, Immunofluorescence and Western Blot research applications.
Applications	IHC-P, IF-P, WB
Host/Source	Rabbit
Reactivity	Human, Rat, Mouse

PRODUCT PROPERTIES

Clonality	Polyclonal
Clone ID	
Concentration	1 mg/mL
Conjugation	Unconjugated
Purification	The antibody was affinity-purified from rabbit anti-serum by affinity-chromatography.
Dilution Range	IHC-P 1:50-200 WB 1:500-2000
Formulation	PBS, 50% Glycerol, 0.5% BSA and 0.02% Sodium Azide.
Isotype	IgG
Storage	Store at -20°C for up to 1 year from the date of receipt, and avoid repeat freeze-thaw cycles.
Instruction	

TARGET INFORMATION

Gene ID	4277
Gene Symbol	MICB
Uniprot ID	MICB_HUMAN
Immunogen	Synthesized peptide derived from human MICB
Immunogen Region	
Specificity	MICB polyclonal antibody (Mhc Class I Polypeptide-Related Sequence B) binds to endogenous Mhc Class I Polypeptide-Related Sequence B.
Immunogen Sequence	



Western blot analysis of lysates from Jarakat cells, primary antibody was diluted at 1:1000, 4°C over night

This product is suitable for in-vitro studies under the RESEARCH USE ONLY [RUO] licence. This product must not be used as for diagnostic or other medical purposes.
St John's Laboratory Ltd, Knowledge Dock Business Centre, University Way, London, E16 2RD | Tel: 0208 223 3081