

## Anti-PRSS2 antibody (STJ193165)

STJ193165

### GENERAL INFORMATION

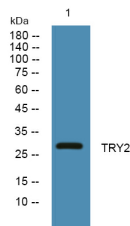
<b>Product Type</b>	Primary antibodies
<b>Short Description</b>	Rabbit polyclonal antibody anti-Trypsin-2 is suitable for use in Immunohistochemistry, Immunofluorescence and Western Blot research applications.
<b>Applications</b>	IHC-P, IF-P, WB
<b>Host/Source</b>	Rabbit
<b>Reactivity</b>	Human, Rat, Mouse

### PRODUCT PROPERTIES

<b>Clonality</b>	Polyclonal
<b>Clone ID</b>	
<b>Concentration</b>	1 mg/mL
<b>Conjugation</b>	Unconjugated
<b>Purification</b>	The antibody was affinity-purified from rabbit anti-serum by affinity-chromatography.
<b>Dilution Range</b>	IHC-P 1:50-200 WB 1:500-2000
<b>Formulation</b>	PBS, 50% Glycerol, 0.5% BSA and 0.02% Sodium Azide.
<b>Isotype</b>	IgG
<b>Storage</b>	Store at -20°C for up to 1 year from the date of receipt, and avoid repeat freeze-thaw cycles.
<b>Instruction</b>	

### TARGET INFORMATION

<b>Gene ID</b>	5645
<b>Gene Symbol</b>	PRSS2
<b>Uniprot ID</b>	TRY2_HUMAN
<b>Immunogen</b>	Synthesized peptide derived from human TRY2
<b>Immunogen Region</b>	
<b>Specificity</b>	PRSS2 polyclonal antibody (Trypsin-2) binds to endogenous Trypsin-2.
<b>Immunogen Sequence</b>	



Western blot analysis of lysates from Jarkat cells. primary antibody was diluted at 1:1000, 4°C over night