

Anti-CEACAM6 antibody (STJ193150)

STJ193150

GENERAL INFORMATION

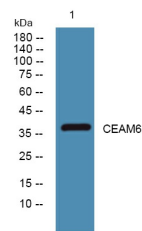
Product Type	Primary antibodies
Short Description	Rabbit polyclonal antibody anti-Carcinoembryonic antigen-Related Cell Adhesion Molecule 6 is suitable for use in Immunohistochemistry, Immunofluorescence and Western Blot research applications.
Applications	IHC-P, IF-P, WB
Host/Source	Rabbit
Reactivity	Human, Rat, Mouse

PRODUCT PROPERTIES

Clonality	Polyclonal
Clone ID	
Concentration	1 mg/mL
Conjugation	Unconjugated
Purification	The antibody was affinity-purified from rabbit anti-serum by affinity-chromatography.
Dilution	IHC-P 1:50-200
Range	WB 1:500-2000
Formulation	PBS, 50% Glycerol, 0.5% BSA and 0.02% Sodium Azide.
Isotype	IgG
Storage Instruction	Store at -20°C for up to 1 year from the date of receipt, and avoid repeat freeze-thaw cycles.

TARGET INFORMATION

Gene ID	4680
Gene Symbol	CEACAM6
Uniprot ID	CEAM6_HUMAN
Immunogen	Synthesized peptide derived from human CEAM6
Region	
Specificity	CEACAM6 polyclonal antibody (Carcinoembryonic Antigen-Related Cell Adhesion Molecule 6) binds to endogenous Carcinoembryonic Antigen-Related Cell Adhesion Molecule 6.
Immunogen Sequence	



Western blot analysis of lysates from HCT116 cells, primary antibody was diluted at 1:1000, 4°C over night

This product is suitable for in-vitro studies under the RESEARCH USE ONLY [RUO] licence. This product must not be used as for diagnostic or other medical purposes.
St John's Laboratory Ltd, Knowledge Dock Business Centre, University Way, London, E16 2RD | Tel: 0208 223 3081