

Anti-OR52M1 antibody (180-260) (STJ192835)

STJ192835

GENERAL INFORMATION

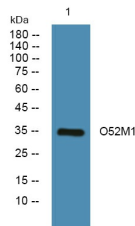
Product Type	Primary antibodies
Short Description	Rabbit polyclonal antibody anti-Olfactory Receptor 52m1 (180-260) is suitable for use in Western Blot and ELISA research applications.
Applications	WB, ELISA
Host/Source	Rabbit
Reactivity	Human, Rat, Mouse

PRODUCT PROPERTIES

Clonality	Polyclonal
Clone ID	
Concentration	1 mg/mL
Conjugation	Unconjugated
Purification	The antibody was affinity-purified from rabbit anti-serum by affinity-chromatography.
Dilution Range	WB 1:500-2000 ELISA 1:5000-20000
Formulation	PBS, 50% Glycerol and 0.02% Sodium Azide.
Isotype	IgG
Storage Instruction	Store at -20°C for up to 1 year from the date of receipt, and avoid repeat freeze-thaw cycles.

TARGET INFORMATION

Gene ID	119772
Gene Symbol	OR52M1
Uniprot ID	O52M1_HUMAN
Immunogen	Synthesized peptide derived from human protein at aa range 180-260
Immunogen Region	180-260
Specificity	OR52M1 polyclonal antibody (Olfactory Receptor 52m1) binds to endogenous Olfactory Receptor 52m1 at the amino acid region 180-260.
Immunogen Sequence	



Western blot analysis of lysates from K562 cells. primary antibody was diluted at 1:1000, 4°C over night