

## Anti-OR10J5 antibody (200-280) (STJ192821)

STJ192821

### GENERAL INFORMATION

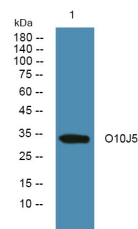
|                          |                                                                                                                                        |
|--------------------------|----------------------------------------------------------------------------------------------------------------------------------------|
| <b>Product Type</b>      | Primary antibodies                                                                                                                     |
| <b>Short Description</b> | Rabbit polyclonal antibody anti-Olfactory Receptor 10j5 (200-280) is suitable for use in Western Blot and ELISA research applications. |
| <b>Applications</b>      | WB, ELISA                                                                                                                              |
| <b>Host/Source</b>       | Rabbit                                                                                                                                 |
| <b>Reactivity</b>        | Human, Rat, Mouse                                                                                                                      |

### PRODUCT PROPERTIES

|                            |                                                                                                |
|----------------------------|------------------------------------------------------------------------------------------------|
| <b>Clonality</b>           | Polyclonal                                                                                     |
| <b>Clone ID</b>            |                                                                                                |
| <b>Concentration</b>       | 1 mg/mL                                                                                        |
| <b>Conjugation</b>         | Unconjugated                                                                                   |
| <b>Purification</b>        | The antibody was affinity-purified from rabbit anti-serum by affinity-chromatography.          |
| <b>Dilution Range</b>      | WB 1:500-2000<br>ELISA 1:5000-20000                                                            |
| <b>Formulation</b>         | PBS, 50% Glycerol and 0.02% Sodium Azide.                                                      |
| <b>Isotype</b>             | IgG                                                                                            |
| <b>Storage Instruction</b> | Store at -20°C for up to 1 year from the date of receipt, and avoid repeat freeze-thaw cycles. |

### TARGET INFORMATION

|                           |                                                                                                                                    |
|---------------------------|------------------------------------------------------------------------------------------------------------------------------------|
| <b>Gene ID</b>            | <a href="#">127385</a>                                                                                                             |
| <b>Gene Symbol</b>        | <a href="#">OR10J5</a>                                                                                                             |
| <b>Uniprot ID</b>         | <a href="#">O10J5_HUMAN</a>                                                                                                        |
| <b>Immunogen</b>          | Synthesized peptide derived from human protein at aa range 200-280                                                                 |
| <b>Immunogen Region</b>   | 200-280                                                                                                                            |
| <b>Specificity</b>        | OR10J5 polyclonal antibody (Olfactory Receptor 10j5) binds to endogenous Olfactory Receptor 10j5 at the amino acid region 200-280. |
| <b>Immunogen Sequence</b> |                                                                                                                                    |



Western blot analysis of lysates from SH-SY5Y cells, primary antibody was diluted at 1:1000, 4°C over night

This product is suitable for in-vitro studies under the RESEARCH USE ONLY [RUO] licence. This product must not be used as for diagnostic or other medical purposes.  
St John's Laboratory Ltd, Knowledge Dock Business Centre, University Way, London, E16 2RD | Tel: 0208 223 3081