

Anti-MC3R antibody (280-360) (STJ192813)

STJ192813

GENERAL INFORMATION

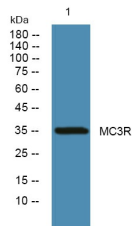
Product Type	Primary antibodies
Short Description	Rabbit polyclonal antibody anti-Melanocortin Receptor 3 (280-360) is suitable for use in Western Blot and ELISA research applications.
Applications	WB, ELISA
Host/Source	Rabbit
Reactivity	Human, Rat, Mouse

PRODUCT PROPERTIES

Clonality	Polyclonal
Clone ID	
Concentration	1 mg/mL
Conjugation	Unconjugated
Purification	The antibody was affinity-purified from rabbit anti-serum by affinity-chromatography.
Dilution Range	WB 1:500-2000 ELISA 1:5000-20000
Formulation	PBS, 50% Glycerol and 0.02% Sodium Azide.
Isotype	IgG
Storage Instruction	Store at -20°C for up to 1 year from the date of receipt, and avoid repeat freeze-thaw cycles.

TARGET INFORMATION

Gene ID	4159
Gene Symbol	MC3R
Uniprot ID	MC3R_HUMAN
Immunogen	Synthesized peptide derived from human protein at aa range 280-360
Immunogen Region	280-360
Specificity	MC3R polyclonal antibody (Melanocortin Receptor 3) binds to endogenous Melanocortin Receptor 3 at the amino acid region 280-360.
Immunogen Sequence	



Western blot analysis of lysates from PC12 cells. primary antibody was diluted at 1:1000, 4°C over night