

Anti-OR4K1 antibody (220-300) (STJ192735)

STJ192735

GENERAL INFORMATION

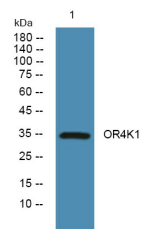
Product Type	Primary antibodies
Short Description	Rabbit polyclonal antibody anti-Olfactory Receptor 4k1 (220-300) is suitable for use in Western Blot and ELISA research applications.
Applications	WB, ELISA
Host/Source	Rabbit
Reactivity	Human, Rat, Mouse

PRODUCT PROPERTIES

Clonality	Polyclonal
Clone ID	
Concentration	1 mg/mL
Conjugation	Unconjugated
Purification	The antibody was affinity-purified from rabbit anti-serum by affinity-chromatography.
Dilution Range	WB 1:500-2000 ELISA 1:5000-20000
Formulation	PBS, 50% Glycerol and 0.02% Sodium Azide.
Isotype	IgG
Storage Instruction	Store at -20°C for up to 1 year from the date of receipt, and avoid repeat freeze-thaw cycles.

TARGET INFORMATION

Gene ID	79544
Gene Symbol	OR4K1
Uniprot ID	OR4K1_HUMAN
Immunogen	Synthesized peptide derived from human protein at aa range 220-300
Immunogen Region	220-300
Specificity	OR4K1 polyclonal antibody (Olfactory Receptor 4k1) binds to endogenous Olfactory Receptor 4k1 at the amino acid region 220-300.
Immunogen Sequence	



Western blot analysis of lysates from A431 cells, primary antibody was diluted at 1:1000, 4°C over night