

Anti-GPR3 antibody (260-340) (STJ192628)

STJ192628

GENERAL INFORMATION

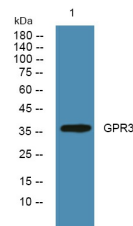
Product Type	Primary antibodies
Short Description	Rabbit polyclonal antibody anti-G-Protein Coupled Receptor 3 (260-340) is suitable for use in Western Blot and ELISA research applications.
Applications	WB, ELISA
Host/Source	Rabbit
Reactivity	Human, Mouse, Rat

PRODUCT PROPERTIES

Clonality	Polyclonal
Clone ID	
Concentration	1 mg/mL
Conjugation	Unconjugated
Purification	The antibody was affinity-purified from rabbit anti-serum by affinity-chromatography.
Dilution Range	WB 1:500-2000 ELISA 1:5000-20000
Formulation	PBS, 50% Glycerol and 0.02% Sodium Azide.
Isotype	IgG
Storage Instruction	Store at -20°C for up to 1 year from the date of receipt, and avoid repeat freeze-thaw cycles.

TARGET INFORMATION

Gene ID	2827
Gene Symbol	GPR3
Uniprot ID	GPR3_HUMAN
Immunogen	Synthesized peptide derived from human protein at aa range 260-340
Immunogen Region	260-340
Specificity	GPR3 polyclonal antibody (G-Protein Coupled Receptor 3) binds to endogenous G-Protein Coupled Receptor 3 at the amino acid region 260-340.
Immunogen Sequence	



Western blot analysis of lysates from K562 cells, primary antibody was diluted at 1:1000, 4°C over night