

Anti-OR52Z1 antibody (220-300) (STJ192620)

STJ192620

GENERAL INFORMATION

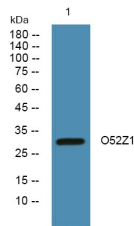
| | |
|--------------------------|----------------------------------------------------------------------------------------------------------------------------------------|
| Product Type | Primary antibodies |
| Short Description | Rabbit polyclonal antibody anti-Olfactory Receptor 52z1 (220-300) is suitable for use in Western Blot and ELISA research applications. |
| Applications | WB, ELISA |
| Host/Source | Rabbit |
| Reactivity | Human, Rat, Mouse |

PRODUCT PROPERTIES

| | |
|----------------------------|------------------------------------------------------------------------------------------------|
| Clonality | Polyclonal |
| Clone ID | |
| Concentration | 1 mg/mL |
| Conjugation | Unconjugated |
| Purification | The antibody was affinity-purified from rabbit anti-serum by affinity-chromatography. |
| Dilution Range | WB 1:500-2000 ELISA 1:5000-20000 |
| Formulation | PBS, 50% Glycerol and 0.02% Sodium Azide. |
| Isotype | IgG |
| Storage Instruction | Store at -20°C for up to 1 year from the date of receipt, and avoid repeat freeze-thaw cycles. |

TARGET INFORMATION

| | |
|---------------------------|------------------------------------------------------------------------------------------------------------------------------------|
| Gene ID | 283110 |
| Gene Symbol | OR52Z1 |
| Uniprot ID | O52Z1_HUMAN |
| Immunogen | Synthesized peptide derived from human protein at aa range 220-300 |
| Immunogen Region | 220-300 |
| Specificity | OR52Z1 polyclonal antibody (Olfactory Receptor 52z1) binds to endogenous Olfactory Receptor 52z1 at the amino acid region 220-300. |
| Immunogen Sequence | |



Western blot analysis of lysates from SW480 cells, primary antibody was diluted at 1:1000, 4°C over night