

Anti-NIPA1 antibody (111-160) (STJ192600)

STJ192600

GENERAL INFORMATION

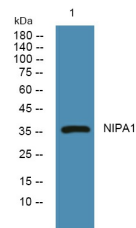
Product Type	Primary antibodies
Short Description	Rabbit polyclonal antibody anti-Magnesium Transporter Nipa1 (111-160) is suitable for use in Western Blot and ELISA research applications.
Applications	WB, ELISA
Host/Source	Rabbit
Reactivity	Human, Mouse

PRODUCT PROPERTIES

Clonality	Polyclonal
Clone ID	
Concentration	1 mg/mL
Conjugation	Unconjugated
Purification	The antibody was affinity-purified from rabbit anti-serum by affinity-chromatography.
Dilution Range	WB 1:500-2000 ELISA 1:5000-20000
Formulation	PBS, 50% Glycerol and 0.02% Sodium Azide.
Isotype	IgG
Storage Instruction	Store at -20°C for up to 1 year from the date of receipt, and avoid repeat freeze-thaw cycles.

TARGET INFORMATION

Gene ID	123606
Gene Symbol	NIPA1
Uniprot ID	NIPA1_HUMAN
Immunogen	Synthesized peptide derived from human protein at aa range 111-160
Immunogen Region	111-160
Specificity	NIPA1 polyclonal antibody (Magnesium Transporter Nipa1) binds to endogenous Magnesium Transporter Nipa1 at the amino acid region 111-160.
Immunogen Sequence	



Western blot analysis of lysates from PC12 cells, primary antibody was diluted at 1:1000, 4°C over night