

Anti-DRAM1 antibody (151-200) (STJ192594)

STJ192594

GENERAL INFORMATION

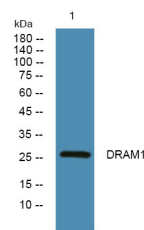
Product Type	Primary antibodies
Short Description	Rabbit polyclonal antibody anti-Dna Damage-Regulated Autophagy Modulator Protein 1 (151-200) is suitable for use in Western Blot and ELISA research applications.
Applications	WB, ELISA
Host/Source	Rabbit
Reactivity	Human, Rat, Mouse

PRODUCT PROPERTIES

Clonality	Polyclonal
Clone ID	
Concentration	1 mg/mL
Conjugation	Unconjugated
Purification	The antibody was affinity-purified from rabbit anti-serum by affinity-chromatography.
Dilution	WB 1:500-2000
Range	ELISA 1:5000-20000
Formulation	PBS, 50% Glycerol and 0.02% Sodium Azide.
Isotype	IgG
Storage	Store at -20°C for up to 1 year from the date of receipt, and avoid repeat freeze-thaw cycles.
Instruction	

TARGET INFORMATION

Gene ID	55332
Gene Symbol	DRAM1
Uniprot ID	DRAM1_HUMAN
Immunogen	Synthesized peptide derived from human protein at aa range 151-200
Immunogen Region	151-200
Specificity	DRAM1 polyclonal antibody (Dna Damage-Regulated Autophagy Modulator Protein 1) binds to endogenous Dna Damage-Regulated Autophagy Modulator Protein 1 at the amino acid region 151-200.
Immunogen Sequence	



Western blot analysis of lysates from SH-SY5Y cells, primary antibody was diluted at 1:1000, 4°C over night