

Anti-BAGE2 antibody (51-100) (STJ192578)

STJ192578

GENERAL INFORMATION

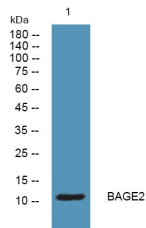
Product Type	Primary antibodies
Short Description	Rabbit polyclonal affinity-purified anti-B Melanoma antigen 2 (51-100) is suitable for use in Western Blot and ELISA research applications.
Applications	WB, ELISA
Host/Source	Rabbit
Reactivity	Human, Rat, Mouse

PRODUCT PROPERTIES

Clonality	Polyclonal
Clone ID	
Concentration	1 mg/mL
Conjugation	Unconjugated
Purification	The antibody was affinity-purified from rabbit anti-serum by affinity-chromatography.
Dilution Range	WB 1:500-2000 ELISA 1:5000-20000
Formulation	PBS, 50% Glycerol and 0.02% Sodium Azide.
Isotype	IgG
Storage Instruction	Store at -20°C for up to 1 year from the date of receipt, and avoid repeat freeze-thaw cycles.

TARGET INFORMATION

Gene ID	NA
Gene Symbol	BAGE2
Uniprot ID	BAGE2_HUMAN
Immunogen	Synthesized peptide derived from human protein at aa range 51-100
Immunogen Region	51-100
Specificity	BAGE2 polyclonal antibody (B Melanoma Antigen 2) binds to endogenous B Melanoma Antigen 2 at the amino acid region 51-100.
Immunogen Sequence	



Western blot analysis of lysates from U2OS cells, primary antibody was diluted at 1:1000, 4°C over night