

Anti-SPRY4 antibody (230-310) (STJ192423)

STJ192423

GENERAL INFORMATION

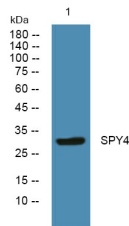
Product Type	Primary antibodies
Short Description	Rabbit polyclonal antibody anti-Protein Sprouty Homolog 4 (230-310) is suitable for use in Western Blot and ELISA research applications.
Applications	WB, ELISA
Host/Source	Rabbit
Reactivity	Human, Mouse

PRODUCT PROPERTIES

Clonality	Polyclonal
Clone ID	
Concentration	1 mg/mL
Conjugation	Unconjugated
Purification	The antibody was affinity-purified from rabbit anti-serum by affinity-chromatography.
Dilution Range	WB 1:500-2000 ELISA 1:5000-20000
Formulation	PBS, 50% Glycerol and 0.02% Sodium Azide.
Isotype	IgG
Storage Instruction	Store at -20°C for up to 1 year from the date of receipt, and avoid repeat freeze-thaw cycles.

TARGET INFORMATION

Gene ID	81848
Gene Symbol	SPRY4
Uniprot ID	SPY4_HUMAN
Immunogen	Synthesized peptide derived from human protein at aa range 230-310
Immunogen Region	230-310
Specificity	SPRY4 polyclonal antibody (Protein Sprouty Homolog 4) binds to endogenous Protein Sprouty Homolog 4 at the amino acid region 230-310.
Immunogen Sequence	



Western blot analysis of lysates from U2OS cells, primary antibody was diluted at 1:1000, 4°C over night