

Anti-BAG2 antibody (STJ191961)

STJ191961

GENERAL INFORMATION

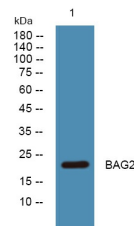
Product Type	Primary antibodies
Short Description	Rabbit polyclonal antibody anti-Bag Family Molecular Chaperone Regulator 2 is suitable for use in Western Blot and ELISA research applications.
Applications	WB, ELISA
Host/Source	Rabbit
Reactivity	Human, Mouse

PRODUCT PROPERTIES

Clonality	Polyclonal
Clone ID	
Concentration	1 mg/mL
Conjugation	Unconjugated
Purification	The antibody was affinity-purified from rabbit anti-serum by affinity-chromatography.
Dilution Range	WB 1:500-2000 ELISA 1:5000-20000
Formulation	PBS, 50% Glycerol and 0.02% Sodium Azide.
Isotype	IgG
Storage Instruction	Store at -20°C for up to 1 year from the date of receipt, and avoid repeat freeze-thaw cycles.

TARGET INFORMATION

Gene ID	9532
Gene Symbol	BAG2
Uniprot ID	BAG2_HUMAN
Immunogen	Synthesized peptide derived from part region of human protein
Immunogen Region	
Specificity	BAG2 polyclonal antibody (Bag Family Molecular Chaperone Regulator 2) binds to endogenous Bag Family Molecular Chaperone Regulator 2.
Immunogen Sequence	



Western blot analysis of lysates from HCT116 cells. primary antibody was diluted at 1:1000, 4°C over night