

Anti-IGFL4 antibody (STJ191868)

STJ191868

GENERAL INFORMATION

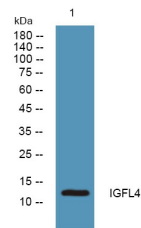
Product Type	Primary antibodies
Short Description	Rabbit polyclonal antibody anti-Insulin Growth Factor-Like Family Member 4 is suitable for use in Western Blot and ELISA research applications.
Applications	WB, ELISA
Host/Source	Rabbit
Reactivity	Human, Rat, Mouse

PRODUCT PROPERTIES

Clonality	Polyclonal
Clone ID	
Concentration	1 mg/mL
Conjugation	Unconjugated
Purification	The antibody was affinity-purified from rabbit anti-serum by affinity-chromatography.
Dilution Range	WB 1:500-2000 ELISA 1:5000-20000
Formulation	PBS, 50% Glycerol and 0.02% Sodium Azide.
Isotype	IgG
Storage Instruction	Store at -20°C for up to 1 year from the date of receipt, and avoid repeat freeze-thaw cycles.

TARGET INFORMATION

Gene ID	444882
Gene Symbol	IGFL4
Uniprot ID	IGFL4_HUMAN
Immunogen	Synthesized peptide derived from part region of human protein
Immunogen Region	
Specificity	IGFL4 polyclonal antibody (Insulin Growth Factor-Like Family Member 4) binds to endogenous Insulin Growth Factor-Like Family Member 4.
Immunogen Sequence	



Western blot analysis of lysates from SH-SY5Y cells. primary antibody was diluted at 1:1000, 4°C over night.