

Anti-RAB39A antibody (50-130) (STJ191283)

STJ191283

GENERAL INFORMATION

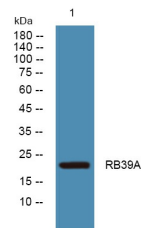
Product Type	Primary antibodies
Short Description	Rabbit polyclonal antibody anti-Ras-Related Protein Rab-39a (50-130) is suitable for use in Western Blot and ELISA research applications.
Applications	WB, ELISA
Host/Source	Rabbit
Reactivity	Human, Mouse

PRODUCT PROPERTIES

Clonality	Polyclonal
Clone ID	
Concentration	1 mg/mL
Conjugation	Unconjugated
Purification	The antibody was affinity-purified from rabbit anti-serum by affinity-chromatography.
Dilution Range	WB 1:500-2000 ELISA 1:5000-20000
Formulation	PBS, 50% Glycerol and 0.02% Sodium Azide.
Isotype	IgG
Storage Instruction	Store at -20°C for up to 1 year from the date of receipt, and avoid repeat freeze-thaw cycles.

TARGET INFORMATION

Gene ID	54734
Gene Symbol	RAB39A
Uniprot ID	RB39A_HUMAN
Immunogen	Synthesized peptide derived from human protein at aa range 50-130
Immunogen Region	50-130
Specificity	RAB39A polyclonal antibody (Ras-Related Protein Rab-39a) binds to endogenous Ras-Related Protein Rab-39a at the amino acid region 50-130.
Immunogen Sequence	



Western blot analysis of lysates from DU145 cells. primary antibody was diluted at 1:1000, 4°C over night