

Anti-RAB13 antibody (40-120) (STJ191269)

STJ191269

GENERAL INFORMATION

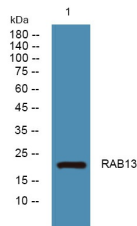
Product Type	Primary antibodies
Short Description	Rabbit polyclonal antibody anti-Ras-Related Protein Rab-13 (40-120) is suitable for use in Western Blot and ELISA research applications.
Applications	WB, ELISA
Host/Source	Rabbit
Reactivity	Human, Rat, Mouse

PRODUCT PROPERTIES

Clonality	Polyclonal
Clone ID	
Concentration	1 mg/mL
Conjugation	Unconjugated
Purification	The antibody was affinity-purified from rabbit anti-serum by affinity-chromatography.
Dilution Range	WB 1:500-2000 ELISA 1:5000-20000
Formulation	PBS, 50% Glycerol and 0.02% Sodium Azide.
Isotype	IgG
Storage Instruction	Store at -20°C for up to 1 year from the date of receipt, and avoid repeat freeze-thaw cycles.

TARGET INFORMATION

Gene ID	5872
Gene Symbol	RAB13
Uniprot ID	RAB13_HUMAN
Immunogen	Synthesized peptide derived from human protein at aa range 40-120
Immunogen Region	40-120
Specificity	RAB13 polyclonal antibody (Ras-Related Protein Rab-13) binds to endogenous Ras-Related Protein Rab-13 at the amino acid region 40-120.
Immunogen Sequence	



Western blot analysis of lysates from DU145 cells. primary antibody was diluted at 1:1000, 4°C over night