

Anti-RAC2 antibody (130-210) (STJ191266)

STJ191266

GENERAL INFORMATION

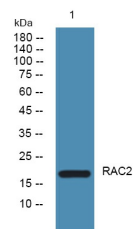
| | |
|--------------------------|---|
| Product Type | Primary antibodies |
| Short Description | Rabbit polyclonal antibody anti-Ras-Related C3 Botulinum Toxin Substrate 2 (130-210) is suitable for use in Western Blot and ELISA research applications. |
| Applications | WB, ELISA |
| Host/Source | Rabbit |
| Reactivity | Human, Mouse |

PRODUCT PROPERTIES

| | |
|-----------------------|--|
| Clonality | Polyclonal |
| Clone ID | |
| Concentration | 1 mg/mL |
| Conjugation | Unconjugated |
| Purification | The antibody was affinity-purified from rabbit anti-serum by affinity-chromatography. |
| Dilution Range | WB 1:500-2000 ELISA 1:5000-20000 |
| Formulation | PBS, 50% Glycerol and 0.02% Sodium Azide. |
| Isotype | IgG |
| Storage | Store at -20°C for up to 1 year from the date of receipt, and avoid repeat freeze-thaw cycles. |
| Instruction | |

TARGET INFORMATION

| | |
|---------------------------|--|
| Gene ID | 5880 |
| Gene Symbol | RAC2 |
| Uniprot ID | RAC2_HUMAN |
| Immunogen | Synthesized peptide derived from human protein at aa range 130-210 |
| Immunogen Region | 130-210 |
| Specificity | RAC2 polyclonal antibody (Ras-Related C3 Botulinum Toxin Substrate 2) binds to endogenous Ras-Related C3 Botulinum Toxin Substrate 2 at the amino acid region 130-210. |
| Immunogen Sequence | |



Western blot analysis of lysates from U2OS cells, primary antibody was diluted at 1:1000, 4°C over night

This product is suitable for in-vitro studies under the RESEARCH USE ONLY [RUO] licence. This product must not be used as for diagnostic or other medical purposes.
St John's Laboratory Ltd, Knowledge Dock Business Centre, University Way, London, E16 2RD | Tel: 0208 223 3081