

## Anti-PDHA2 antibody (310-390) (STJ191234)

STJ191234

### GENERAL INFORMATION

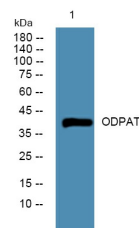
|                          |   |
|--------------------------|---|
| <b>Product Type</b>      | Primary antibodies  |
| <b>Short Description</b> | Rabbit polyclonal antibody anti-Pyruvate Dehydrogenase E1 Component Subunit Alpha-Testis-Specific Form-Mitochondrial (310-390) is suitable for use in Western Blot and ELISA research applications. |
| <b>Applications</b>      | WB, ELISA   |
| <b>Host/Source</b>       | Rabbit  |
| <b>Reactivity</b>        | Human, Rat, Mouse   |

### PRODUCT PROPERTIES

|                      |  |
|----------------------|--|
| <b>Clonality</b>     | Polyclonal   |
| <b>Clone ID</b>      |  |
| <b>Concentration</b> | 1 mg/mL  |
| <b>Conjugation</b>   | Unconjugated   |
| <b>Purification</b>  | The antibody was affinity-purified from rabbit anti-serum by affinity-chromatography.          |
| <b>Dilution</b>      | WB 1:500-2000  |
| <b>Range</b>         | ELISA 1:5000-20000   |
| <b>Formulation</b>   | PBS, 50% Glycerol and 0.02% Sodium Azide.  |
| <b>Isotype</b>       | IgG  |
| <b>Storage</b>       | Store at -20°C for up to 1 year from the date of receipt, and avoid repeat freeze-thaw cycles. |
| <b>Instruction</b>   |  |

### TARGET INFORMATION

|                           |  |
|---------------------------|--|
| <b>Gene ID</b>            | 5161   |
| <b>Gene Symbol</b>        | PDHA2  |
| <b>Uniprot ID</b>         | ODPAT_HUMAN  |
| <b>Immunogen</b>          | Synthesized peptide derived from human protein at aa range 310-390   |
| <b>Immunogen Region</b>   | 310-390  |
| <b>Specificity</b>        | PDHA2 polyclonal antibody (Pyruvate Dehydrogenase E1 Component Subunit Alpha-Testis-Specific Form-Mitochondrial) binds to endogenous Pyruvate Dehydrogenase E1 Component Subunit Alpha-Testis-Specific Form-Mitochondrial at the amino acid region 310-390 |
| <b>Immunogen Sequence</b> |  |



Western blot analysis of lysates from HCT116 cells, primary antibody was diluted at 1:1000, 4°C over night

This product is suitable for in-vitro studies under the RESEARCH USE ONLY [RUO] licence. This product must not be used as for diagnostic or other medical purposes.  
 St John's Laboratory Ltd, Knowledge Dock Business Centre, University Way, London, E16 2RD | Tel: 0208 223 3081