

## Anti-SYF2 antibody (160-240) (STJ191205)

STJ191205

### GENERAL INFORMATION

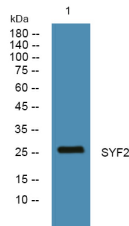
<b>Product Type</b>	Primary antibodies
<b>Short Description</b>	Rabbit polyclonal antibody anti-Pre-Mrna-Splicing Factor Syf2 (160-240) is suitable for use in Western Blot and ELISA research applications.
<b>Applications</b>	WB, ELISA
<b>Host/Source</b>	Rabbit
<b>Reactivity</b>	Human, Mouse, Rat

### PRODUCT PROPERTIES

<b>Clonality</b>	Polyclonal
<b>Clone ID</b>	
<b>Concentration</b>	1 mg/mL
<b>Conjugation</b>	Unconjugated
<b>Purification</b>	The antibody was affinity-purified from rabbit anti-serum by affinity-chromatography.
<b>Dilution Range</b>	WB 1:500-2000 ELISA 1:5000-20000
<b>Formulation</b>	PBS, 50% Glycerol and 0.02% Sodium Azide.
<b>Isotype</b>	IgG
<b>Storage Instruction</b>	Store at -20°C for up to 1 year from the date of receipt, and avoid repeat freeze-thaw cycles.

### TARGET INFORMATION

<b>Gene ID</b>	<a href="#">25949</a>
<b>Gene Symbol</b>	<a href="#">SYF2</a>
<b>Uniprot ID</b>	<a href="#">SYF2_HUMAN</a>
<b>Immunogen</b>	Synthesized peptide derived from human protein at aa range 160-240
<b>Immunogen Region</b>	160-240
<b>Specificity</b>	SYF2 polyclonal antibody (Pre-Mrna-Splicing Factor Syf2) binds to endogenous Pre-Mrna-Splicing Factor Syf2 at the amino acid region 160-240.
<b>Immunogen Sequence</b>	



Western blot analysis of lysates from PC12 cells, primary antibody was diluted at 1:1000, 4°C over night