

Anti-PLSCR2 antibody (90-170) (STJ191161)

STJ191161

GENERAL INFORMATION

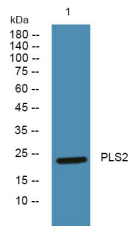
Product Type	Primary antibodies
Short Description	Rabbit polyclonal antibody anti-Phospholipid Scramblase 2 (90-170) is suitable for use in Western Blot and ELISA research applications.
Applications	WB, ELISA
Host/Source	Rabbit
Reactivity	Human, Rat, Mouse

PRODUCT PROPERTIES

Clonality	Polyclonal
Clone ID	
Concentration	1 mg/mL
Conjugation	Unconjugated
Purification	The antibody was affinity-purified from rabbit anti-serum by affinity-chromatography.
Dilution Range	WB 1:500-2000 ELISA 1:5000-20000
Formulation	PBS, 50% Glycerol and 0.02% Sodium Azide.
Isotype	IgG
Storage Instruction	Store at -20°C for up to 1 year from the date of receipt, and avoid repeat freeze-thaw cycles.

TARGET INFORMATION

Gene ID	57047
Gene Symbol	PLSCR2
Uniprot ID	PLS2_HUMAN
Immunogen	Synthesized peptide derived from human protein at aa range 90-170
Immunogen Region	90-170
Specificity	PLSCR2 polyclonal antibody (Phospholipid Scramblase 2) binds to endogenous Phospholipid Scramblase 2 at the amino acid region 90-170.
Immunogen Sequence	



Western blot analysis of lysates from PC12 cells. primary antibody was diluted at 1:1000, 4°C over night

This product is suitable for in-vitro studies under the RESEARCH USE ONLY [RUO] licence. This product must not be used as for diagnostic or other medical purposes.
St John's Laboratory Ltd, Knowledge Dock Business Centre, University Way, London, E16 2RD | Tel: 0208 223 3081