

Anti-NPTX2 antibody (130-210) (STJ191081)

STJ191081

GENERAL INFORMATION

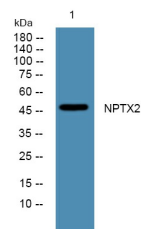
Product Type	Primary antibodies
Short Description	Rabbit polyclonal antibody anti-Neuronal Pentraxin-2 (130-210) is suitable for use in Western Blot and ELISA research applications.
Applications	WB, ELISA
Host/Source	Rabbit
Reactivity	Human, Rat, Mouse

PRODUCT PROPERTIES

Clonality	Polyclonal
Clone ID	
Concentration	1 mg/mL
Conjugation	Unconjugated
Purification	The antibody was affinity-purified from rabbit anti-serum by affinity-chromatography.
Dilution Range	WB 1:500-2000 ELISA 1:5000-20000
Formulation	PBS, 50% Glycerol and 0.02% Sodium Azide.
Isotype	IgG
Storage Instruction	Store at -20°C for up to 1 year from the date of receipt, and avoid repeat freeze-thaw cycles.

TARGET INFORMATION

Gene ID	4885
Gene Symbol	NPTX2
Uniprot ID	NPTX2_HUMAN
Immunogen	Synthesized peptide derived from human protein at aa range 130-210
Immunogen Region	130-210
Specificity	NPTX2 polyclonal antibody (Neuronal Pentraxin-2) binds to endogenous Neuronal Pentraxin-2 at the amino acid region 130-210.
Immunogen Sequence	



Western blot analysis of lysates from DU145 cells. primary antibody was diluted at 1:1000, 4°C over night

This product is suitable for in-vitro studies under the RESEARCH USE ONLY [RUO] licence. This product must not be used as for diagnostic or other medical purposes.
St John's Laboratory Ltd, Knowledge Dock Business Centre, University Way, London, E16 2RD | Tel: 0208 223 3081