

Anti-NDUFA6 antibody (20-100) (STJ191026)

STJ191026

GENERAL INFORMATION

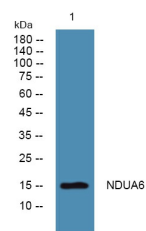
Product Type	Primary antibodies
Short Description	Rabbit polyclonal antibody anti-Nadh Dehydrogenase Ubiquinone 1 Alpha Subcomplex Subunit 6 (20-100) is suitable for use in Western Blot and ELISA research applications.
Applications	WB, ELISA
Host/Source	Rabbit
Reactivity	Human, Mouse

PRODUCT PROPERTIES

Clonality	Polyclonal
Clone ID	
Concentration	1 mg/mL
Conjugation	Unconjugated
Purification	The antibody was affinity-purified from rabbit anti-serum by affinity-chromatography.
Dilution	WB 1:500-2000
Range	ELISA 1:5000-20000
Formulation	PBS, 50% Glycerol and 0.02% Sodium Azide.
Isotype	IgG
Storage Instruction	Store at -20°C for up to 1 year from the date of receipt, and avoid repeat freeze-thaw cycles.

TARGET INFORMATION

Gene ID	4700
Gene Symbol	NDUFA6
Uniprot ID	NDUA6_HUMAN
Immunogen	Synthesized peptide derived from human protein at aa range 20-100
Immunogen Region	20-100
Specificity	NDUFA6 polyclonal antibody (Nadh Dehydrogenase Ubiquinone 1 Alpha Subcomplex Subunit 6) binds to endogenous Nadh Dehydrogenase Ubiquinone 1 Alpha Subcomplex Subunit 6 at the amino acid region 20-100.
Immunogen Sequence	



Western blot analysis of lysates from SH-SY5Y cells, primary antibody was diluted at 1:1000, 4°C over night

This product is suitable for in-vitro studies under the RESEARCH USE ONLY [RUO] licence. This product must not be used as for diagnostic or other medical purposes.
St John's Laboratory Ltd, Knowledge Dock Business Centre, University Way, London, E16 2RD | Tel: 0208 223 3081