

Anti-MAL antibody (70-150) (STJ190993)

STJ190993

GENERAL INFORMATION

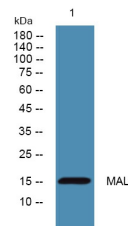
Product Type	Primary antibodies
Short Description	Rabbit polyclonal antibody anti-Myelin And Lymphocyte Protein (70-150) is suitable for use in Western Blot and ELISA research applications.
Applications	WB, ELISA
Host/Source	Rabbit
Reactivity	Human, Mouse, Rat

PRODUCT PROPERTIES

Clonality	Polyclonal
Clone ID	
Concentration	1 mg/mL
Conjugation	Unconjugated
Purification	The antibody was affinity-purified from rabbit anti-serum by affinity-chromatography.
Dilution Range	WB 1:500-2000 ELISA 1:5000-20000
Formulation	PBS, 50% Glycerol and 0.02% Sodium Azide.
Isotype	IgG
Storage Instruction	Store at -20°C for up to 1 year from the date of receipt, and avoid repeat freeze-thaw cycles.

TARGET INFORMATION

Gene ID	4118
Gene Symbol	MAL
Uniprot ID	MAL_HUMAN
Immunogen	Synthesized peptide derived from human protein at aa range 70-150
Immunogen Region	70-150
Specificity	MAL polyclonal antibody (Myelin And Lymphocyte Protein) binds to endogenous Myelin And Lymphocyte Protein at the amino acid region 70-150.
Immunogen Sequence	



Western blot analysis of lysates from SW480 cells. primary antibody was diluted at 1:1000, 4°C over night