

Anti-POLR2C antibody (STJ190762)

STJ190762

GENERAL INFORMATION

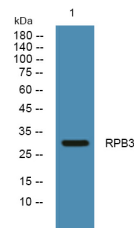
Product Type	Primary antibodies
Short Description	Rabbit polyclonal antibody anti-Dna-Directed Rna Polymerase Ii Subunit Rpb3 is suitable for use in Western Blot and ELISA research applications.
Applications	WB, ELISA
Host/Source	Rabbit
Reactivity	Human, Mouse

PRODUCT PROPERTIES

Clonality	Polyclonal
Clone ID	
Concentration	1 mg/mL
Conjugation	Unconjugated
Purification	The antibody was affinity-purified from rabbit anti-serum by affinity-chromatography.
Dilution Range	WB 1:500-2000 ELISA 1:5000-20000
Formulation	PBS, 50% Glycerol and 0.02% Sodium Azide.
Isotype	IgG
Storage Instruction	Store at -20°C for up to 1 year from the date of receipt, and avoid repeat freeze-thaw cycles.

TARGET INFORMATION

Gene ID	5432
Gene Symbol	POLR2C
Uniprot ID	RPB3_HUMAN
Immunogen	Synthesized peptide derived from part region of human protein
Immunogen Region	
Specificity	POLR2C polyclonal antibody (Dna-Directed Rna Polymerase Ii Subunit Rpb3) binds to endogenous Dna-Directed Rna Polymerase Ii Subunit Rpb3.
Immunogen Sequence	



Western blot analysis of lysates from SW480 cells. primary antibody was diluted at 1:1000, 4°C over night