

Anti-CA10 antibody (STJ190655)

STJ190655

GENERAL INFORMATION

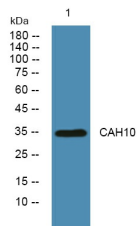
Product Type	Primary antibodies
Short Description	Rabbit polyclonal antibody anti-Carbonic Anhydrase-Related Protein 10 is suitable for use in Western Blot and ELISA research applications.
Applications	WB, ELISA
Host/Source	Rabbit
Reactivity	Human, Mouse

PRODUCT PROPERTIES

Clonality	Polyclonal
Clone ID	
Concentration	1 mg/mL
Conjugation	Unconjugated
Purification	The antibody was affinity-purified from rabbit anti-serum by affinity-chromatography.
Dilution Range	WB 1:500-2000 ELISA 1:5000-20000
Formulation	PBS, 50% Glycerol and 0.02% Sodium Azide.
Isotype	IgG
Storage Instruction	Store at -20°C for up to 1 year from the date of receipt, and avoid repeat freeze-thaw cycles.

TARGET INFORMATION

Gene ID	56934
Gene Symbol	CA10
Uniprot ID	CAH10_HUMAN
Immunogen	Synthesized peptide derived from part region of human protein
Immunogen Region	
Specificity	CA10 polyclonal antibody (Carbonic Anhydrase-Related Protein 10) binds to endogenous Carbonic Anhydrase-Related Protein 10.
Immunogen Sequence	



Western blot analysis of lysates from K562 cells, primary antibody was diluted at 1:1000, 4°C over night

This product is suitable for in-vitro studies under the RESEARCH USE ONLY [RUO] licence. This product must not be used as for diagnostic or other medical purposes.
St John's Laboratory Ltd, Knowledge Dock Business Centre, University Way, London, E16 2RD | Tel: 0208 223 3081