

Anti-KCNJ14 antibody (350-430) (STJ190595)

STJ190595

GENERAL INFORMATION

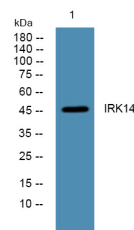
Product Type	Primary antibodies
Short Description	Rabbit polyclonal antibody anti-Atp-Sensitive Inward Rectifier Potassium Channel 14 (350-430) is suitable for use in Western Blot and ELISA research applications.
Applications	WB, ELISA
Host/Source	Rabbit
Reactivity	Human, Rat, Mouse

PRODUCT PROPERTIES

Clonality	Polyclonal
Clone ID	
Concentration	1 mg/mL
Conjugation	Unconjugated
Purification	The antibody was affinity-purified from rabbit anti-serum by affinity-chromatography.
Dilution Range	WB 1:500-2000 ELISA 1:5000-20000
Formulation	PBS, 50% Glycerol and 0.02% Sodium Azide.
Isotype	IgG
Storage	Store at -20°C for up to 1 year from the date of receipt, and avoid repeat freeze-thaw cycles.
Instruction	

TARGET INFORMATION

Gene ID	3770
Gene Symbol	KCNJ14
Uniprot ID	KCJ14_HUMAN
Immunogen	Synthesized peptide derived from human protein at aa range 350-430
Immunogen Region	350-430
Specificity	KCNJ14 polyclonal antibody (Atp-Sensitive Inward Rectifier Potassium Channel 14) binds to endogenous Atp-Sensitive Inward Rectifier Potassium Channel 14 at the amino acid region 350-430.
Immunogen Sequence	



Western blot analysis of lysates from SW480 cells, primary antibody was diluted at 1:1000, 4°C over night