

Anti-RPS3A antibody (190-270) (STJ190472)

STJ190472

GENERAL INFORMATION

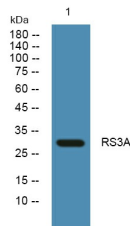
Product Type	Primary antibodies
Short Description	Rabbit polyclonal antibody anti-40s Ribosomal Protein S3a (190-270) is suitable for use in Western Blot and ELISA research applications.
Applications	WB, ELISA
Host/Source	Rabbit
Reactivity	Human, Mouse, Rat

PRODUCT PROPERTIES

Clonality	Polyclonal
Clone ID	
Concentration	1 mg/mL
Conjugation	Unconjugated
Purification	The antibody was affinity-purified from rabbit anti-serum by affinity-chromatography.
Dilution Range	WB 1:500-2000 ELISA 1:5000-20000
Formulation	PBS, 50% Glycerol and 0.02% Sodium Azide.
Isotype	IgG
Storage Instruction	Store at -20°C for up to 1 year from the date of receipt, and avoid repeat freeze-thaw cycles.

TARGET INFORMATION

Gene ID	6189
Gene Symbol	RPS3A
Uniprot ID	RS3A_HUMAN
Immunogen	Synthesized peptide derived from human protein at aa range 190-270
Immunogen Region	190-270
Specificity	RPS3A polyclonal antibody (40s Ribosomal Protein S3a) binds to endogenous 40s Ribosomal Protein S3a at the amino acid region 190-270.
Immunogen Sequence	



Western blot analysis of lysates from PC12 cells. primary antibody was diluted at 1:1000, 4°C over night